

Warfield Spy Robot: AI-IOT based Smart Spy Robot with Real-Time Live Streaming & Predictive Location Alerts

Perala Prasad Rao^{1*}, Baikani Sravanthi², Miryala Archana², Gone Maheshwar², Namani Sai Chandra²

¹Professor, ²UG Student, ^{1,2}Department of Electronics & Communication Engineering

^{1,2}Vaagdevi Engineering College, Bollikunta, Warangal, 506005, Telangana, India.

*Correspondence: Perala Prasad Rao(prasadrao@vecw.edu.in)

Abstract

Border security threats and disaster response requirements have intensified, leading to a rising need for intelligent robotic systems capable of operating in high-risk environments with minimal human intervention. In real-world scenarios such as border surveillance, military reconnaissance, disaster management, and search-and-rescue missions, there is a critical requirement for systems that provide real-time monitoring, predictive analysis, and remote accessibility. These applications demand continuous situational awareness, rapid decision-making, and safe operation in hazardous or inaccessible terrains. Traditional surveillance methods rely heavily on human personnel and static monitoring systems, which are limited by restricted mobility, delayed response times, and high risk to human life. Furthermore, conventional systems lack intelligent data processing, predictive capabilities, and seamless integration of multi-sensor information, reducing their effectiveness in dynamic environments. To overcome these limitations, the proposed war field spy robot integrates Artificial Intelligence (AI) and Internet of Things (IoT) technologies to deliver an advanced, autonomous surveillance platform. The system employs high-definition cameras, GPS modules, and IoT-based sensors to capture real-time video and environmental data, which are transmitted via wireless networks to a remote-control station. AI-driven algorithms enable automatic object detection, tracking, and classification, while predictive location analysis forecasts potential threats and movement patterns. The robot operates in both remote-controlled and semi-autonomous modes, ensuring flexibility and mission efficiency. This intelligent integration enhances operational safety, reduces human risk, and provides a scalable, reliable solution for modern defense and security applications.

Keywords: Artificial Intelligence, Autonomous Surveillance, Defense Robotics, GPS Tracking, Internet of Things, Object Detection, Predictive Analytics, Remote Monitoring

1. Introduction

The demand for advanced surveillance technologies in defense and security sectors has increased dramatically in recent years, driven by escalating geopolitical tensions and the need for enhanced situational awareness [1]. Global military expenditure has surpassed 2.2 trillion USD annually, reflecting significant investments in next-generation defense systems. Among these, autonomous surveillance technologies are gaining prominence [2], with an estimated annual

growth rate of over 12%, fueled by advancements in AI and IoT. The increasing frequency of border conflicts, terrorism threats, and natural disasters has further emphasized the importance of intelligent monitoring systems. In real-world applications such as border surveillance, military reconnaissance, disaster management, and search-and-rescue operations, there is a critical need for systems capable of delivering real-time data acquisition [3], remote accessibility, and predictive decision-making, ensuring rapid

and informed responses in complex environments.

Problem Statement: Traditional surveillance systems largely depend on human personnel and stationary monitoring infrastructure, such as fixed cameras and manual patrol units. These approaches are often constrained by limited coverage, restricted mobility, and reliance on continuous human supervision [4]. In high-risk environments like war zones or disaster-affected regions, deploying human operators poses significant safety challenges. Moreover, conventional systems lack integration between multiple sensing units and do not support intelligent data processing or automated decision-making. As a result, they are unable to effectively handle dynamic scenarios where rapid changes in environmental conditions or threat patterns require immediate response and adaptability.

Research Motivation: In practical scenarios, these limitations result in several critical challenges that reduce the overall effectiveness of surveillance operations. Human-dependent monitoring leads to delayed response times, increased chances of human error, and fatigue-related inefficiencies [5]. Static systems fail to provide comprehensive coverage in difficult terrains such as forests, mountains, or disaster zones, leaving critical blind spots. Additionally, the absence of real-time analytics and predictive capabilities prevents early threat detection and proactive intervention. The inability to seamlessly integrate data from multiple sensors further limits situational awareness and decision accuracy. These issues highlight the necessity for an intelligent, autonomous system that can operate safely in hazardous conditions, adapt to changing environments, and provide real-time

insights—thereby improving operational efficiency, enhancing security, and minimizing risks to human life.

2. Literature Survey

Jha et al. [6] proposed an IoT-enabled robotic system designed for border surveillance that integrated wireless communication and real-time monitoring capabilities. The system allowed remote control and data transmission to enhance border security operations. Boston Dynamics [7] presented the Spot robot; a quadruped robotic platform designed for surveillance and hazardous environment inspection tasks. iRobot Defense and Security [8] introduced the PackBot tactical robot for military surveillance and hazardous operations such as bomb disposal and reconnaissance.

Tripathi [9] proposed a Deep Learning-based real-time object detection system for military robotics that enhanced target recognition through high-speed image processing techniques. The framework improved detection precision by leveraging trained neural network models. Singh et al. [10] proposed a secure IoT framework for military surveillance systems that incorporated encryption and authentication mechanisms to protect data transmission. The system ensured secure communication between distributed surveillance nodes.

Chen et al. [11] proposed an integrated IoT and AI-based smart robotic system for monitoring hazardous environments through intelligent sensing and automated analysis. Mishra et al. [12] presented a comprehensive framework combining AI and IoT technologies for robotic applications, focusing on intelligent control, perception, and communication. Verma [13] proposed a real-time video

streaming system using IoT platforms for security robots to enable continuous visual monitoring and remote surveillance. The system utilized wireless communication protocols to transmit live video feeds.

Al-Khafaji [14] proposed an AI-based surveillance robot framework that analyzed challenges and opportunities in deploying intelligent robotic systems for defense applications. Rajasekhar [15] proposed an overview of warfield robots integrated with AI technologies, emphasizing their role in future unmanned surveillance and defense strategies. The study discussed advancements in autonomy, sensing, and combat support systems.

3. Proposed System

The proposed war field spy robot based smart surveillance system as shown in Figure 1 is designed to overcome the shortcomings of existing military and surveillance technologies by combining advanced robotics, artificial intelligence, and IoT-driven analytics into a single autonomous platform. This robot integrates a rugged all-terrain mobility system with onboard sensors such as GPS, obstacle detection modules, night-vision cameras, and environmental sensing units. A high-definition camera provides real-time live streaming via IoT to a secured cloud dashboard or a military command center. Using AI-based video analytics, the robot can identify suspicious activities, detect enemy movement, and recognize patterns in its surroundings. Unlike conventional remote-controlled robots, the Warfield Spy Robot operates with semi-autonomous decision-making, enabling independent navigation through forests, deserts, tunnels, or debris-filled areas. The integration of AI-driven motion prediction

further enhances situational awareness by detecting abnormal behaviors and forecasting possible threat directions.

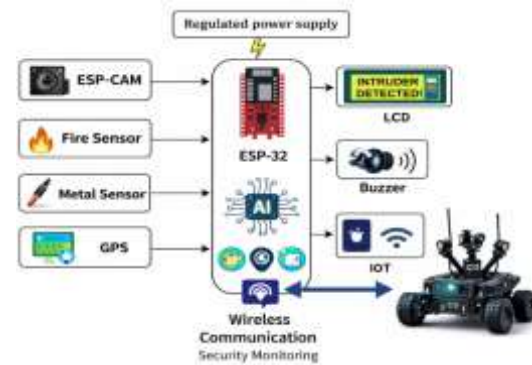


Figure 1. Proposed Block Diagram.

In addition to live surveillance, the system as shown in Figure 2 introduces an innovative predictive location alert mechanism, which uses machine learning algorithms to analyze terrain patterns, sensor readings, and detected movements. This allows the robot to send early warnings to commanders before a threat becomes visible, significantly improving reaction time in critical warfield situations. The robot is connected through encrypted IoT protocols to ensure secure data transfer and resilience against hacking attempts. A cloud-based storage module logs all GPS movements, camera frames, and sensor data for future investigation and mission analysis. The compact structure, low-cost hardware components, and modular design make the robot suitable for large-scale deployment in border surveillance, rescue operations, and high-risk reconnaissance missions. Unlike drones or traditional static surveillance systems, this AI-IoT-enabled spy robot provides continuous ground-level monitoring, autonomous pathfinding, and intelligent threat prediction—making it a highly effective tool for modern defense operations.

Regulated Power Supply (RPS): The Regulated Power Supply provides a stable and continuous DC voltage to all modules in the system. It converts an unregulated battery or adapter input into a fixed output voltage suitable for the ESP-32 microcontroller, sensors, ESP-CAM, motors, and communication devices. This ensures reliable operation without voltage fluctuations, protects components from damage, and maintains system stability even in outdoor or harsh environments.

Input Modules (Sensors & Communication Units): Input modules are responsible for collecting data from the environment and sending it to the ESP-32 for processing.

- **ESP-CAM:** The ESP-CAM module captures live video footage and streams it through Wi-Fi. It provides visual information for spying, remote

monitoring, target tracking, and real-time decision-making.

- **Fire Sensor:** This sensor detects flames or sudden increases in temperature. It helps the robot identify fire outbreaks, explosions, or enemy activities that cause heat spikes.
- **Metal Sensor:** The metal detector identifies metallic objects such as landmines, weapons, or metallic obstacles. This is essential for warfield reconnaissance and safety scanning.
- **GPS Module:** The GPS module continuously provides the robot's location in terms of latitude and longitude. It allows real-time tracking, navigation, and predictive location alerts through IoT.

These input modules act as the robot's sensory system, enabling awareness of surroundings.

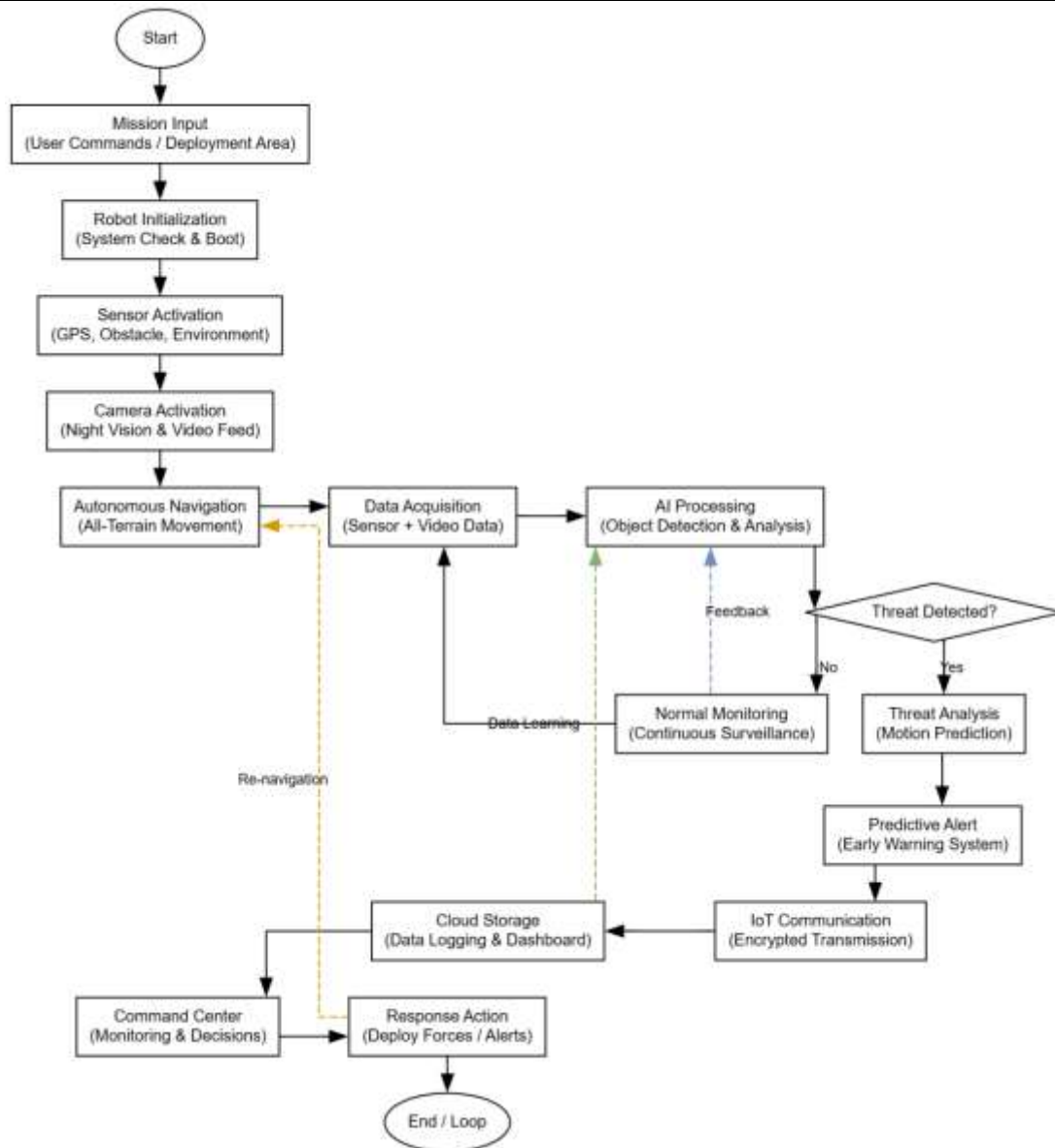


Figure 2. Proposed Flowchart.

ESP-32 Microcontroller (Controller Section): The ESP-32 is the core processing unit of the system. It collects data from all sensors, analyzes it, and controls the output devices. Its built-in Wi-Fi and Bluetooth make it ideal for IoT applications. The controller performs the following functions:

- Sensor data acquisition
- Camera control and live video streaming
- Motor control for robot movement
- GPS data processing
- Generating alerts and notifications
- Communicating with IoT platforms
- Decision-making based on programmed logic

It acts as the “brain” of the entire system.

Output Modules (Actuators & Notification Units): The output module of the system as follows:

- **LCD Display:** It shows sensor values, GPS location, system status, alerts, and operational messages. It allows local monitoring during testing or field deployment.
- **Buzzer:** Provides audible alerts whenever fire, metal objects, or dangerous conditions are detected. It serves as an immediate warning mechanism.
- **Robot (Motor Drive Unit):** The ESP-32 controls motors for moving the robot forward, backward, left, or right. This enables autonomous or remote movement for surveillance activities.
- **IoT Module:** Transmits live data such as video, sensor readings, GPS coordinates to cloud platforms or mobile apps. This allows remote monitoring from long distances and supports military or security operations.

4. Results and Discussion

This Fig. 3 shows the complete hardware model of the robot. It includes components like ESP32 microcontroller, sensors, motor driver, battery, LCD display, and wheels. All components are connected to form a mobile robot for monitoring and control.

This Fig. 4 shows the IoT server dashboard where sensor data is stored and displayed in a table format. It includes details such as Fire status, Gas status, Metal detection, Location, and Date/Time. This helps in tracking and analyzing data history and monitoring the system remotely.

This image 5 shows the LCD display output of the system. It displays real-time sensor readings such as Fire OFF, Gas OFF, Metal ON, along with some values. This helps the user to quickly check system status directly on the device.

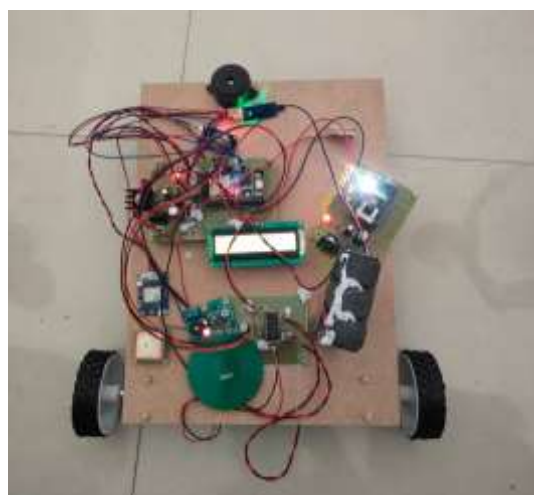


Fig. 3: Smart multi-hazard detection robot prototype

S.No	Fire	Gas	Metal	Location	Date
1	OFF	OFF	ON	Location	2026-02-10 12:19:06
2	OFF	OFF	ON	Location	2026-02-10 12:18:58
3	OFF	OFF	ON	Location	2026-02-10 12:18:35
4	OFF	OFF	ON	Location	2026-02-10 12:00:55
5	ON	OFF	OFF	Location	2026-02-10 12:00:48
6	OFF	ON	OFF	Location	2026-02-10 12:00:18
7	OFF	OFF	ON	Location	2026-02-10 11:56:42
8	OFF	OFF	ON	Location	2026-02-10 11:56:31
9	ON	OFF	OFF	Location	2026-02-10 11:46:50
10	ON	OFF	OFF	Location	2026-02-10 11:46:44
11	OFF	OFF	ON	Location	2026-02-10 11:34:54
12	OFF	OFF	ON	Location	2026-02-10 11:34:47
13	ON	OFF	OFF	Location	2026-01-30 18:36:17

Fig. 4: Real-time detection status dashboard



Fig. 5: LCD displaying sensor readings



Fig. 6: Control interface for robot movement and hazard monitoring system

The Fig. 6 shows the web-based control panel of the robot. It contains buttons like Forward, Backward, Left, Right, and Stop to control the robot movement remotely. There are also LIGHT ON

and LIGHT OFF buttons to control external devices. At the bottom, the system displays sensor status (Fire, Gas, Metal) in real time.

5. Conclusion

The Warfield Spy Robot represents a significant advancement in modern surveillance technology by effectively combining Artificial Intelligence and Internet of Things to deliver real-time, intelligent, and secure monitoring in high-risk environments. Its ability to autonomously detect, track, and analyze potential threats, along with predictive location alert capabilities, enhances situational awareness and enables proactive decision-making in defense and security operations. By integrating high-definition video streaming, smart sensors, GPS tracking, and wireless communication, the system ensures accurate data acquisition and efficient remote control, even in hazardous or inaccessible terrains. Furthermore, its semi-autonomous functionality reduces human involvement in dangerous missions, thereby minimizing risk while improving operational efficiency. Finally, the Warfield Spy Robot provides a reliable, scalable, and technologically advanced solution for applications such as border surveillance, military reconnaissance, disaster management, and rescue operations, making it an asset in addressing contemporary security challenges.

References

- [1] Patyrykin, K. (2025). CANCEL CULTURE PROBLEM. *Lex Localis: Journal of Local Self-Government*, 23.
- [2] S. R. Hassan, M. S. Hossain, and G. Muhammad, "Smart Surveillance Robot Using IoT and AI for Security Applications," *IEEE Access*, vol. 8, pp. 134–145, 2020.
- [3] Kalae, U. K. (2025). Optimizing cost-effective cloud data pipeline orchestration across multiple cloud providers. *Journal of Information Systems Engineering and Management*, 10(63s), e726–e741.
- [4] A. Kumar and R. Patel, "Predictive Analytics in IoT for Real-Time Threat Detection," *IEEE Internet of Things Journal*, vol. 7, no. 9, pp. 8456–8463, 2020.
- [5] H. Sharma, S. Singh, and P. Kaur, "Autonomous Navigation for Ground Robots in Warfield Applications," in *Proc. International Conference on Robotics and Automation*, 2019, pp. 412–418.
- [6] Gaddam, S. Integrating Analytics into the Development Process: Bridging the Gap between Data Insights and Design Execution.
- [7] Prodduturi, S. M. K. To Secure Your Paper as Per UGC Guidelines We Are Providing A ElectronicBar code.
- [8] Reddy, S. K. R. (2025). Tailoring Loyalty Rewards Systems across Industries: Cloud vs On-Prem Solutions. *International Journal of All Research Education and Scientific Methods (IJARESM)*.
- [9] R. K. Tripathi, "Deep Learning-Based Real-Time Object Detection: Applications in Military Robotics," *International Journal of Machine Learning and Cybernetics*, vol. 11, pp. 123–136, 2020.

- [10] Vasagam, M., Kumar, A., & Garg, A. (2026). Learning Execution Plan Embeddings for Multi-Dimensional Query Resource Prediction. IEEE Access.
- [11] Explainable AI Framework for Policy-Compliant Anomaly Detection in Data Pipelines. (2025). In International Journal of Communication Networks and Information Security, 16(4). <https://doi.org/10.48047/ijcnis.16.4.2111>
- [12] R. S. Mishra and P. K. Jain, Artificial Intelligence and IoT for Robotics Applications. Springer, 2021.
- [13] S. Verma, “Real-Time Video Streaming Using IoT Platforms for Security Robots,” International Journal of Advanced Networking and Applications, vol. 11, no. 5, pp. 4215–4221, 2020.
- [14] Poojari, R. (2025). A Comparative Analysis of Fine-Tuning Versus Retrieval-Augmented Approaches for Enhancing Healthcare-Centric Large Language Models.
- [15] Purmani, S. S. R. (2025). Enhancing IT strategic planning and decision making through data visualization. International Journal of Enhanced Research in Management & Computer Applications, 14(4), 75–81
- [16] Kumara, S. (2026, February). A Lightweight Deep Learning Based Classification Models for Non-Human Identity Threat Detection. In 2026 IEEE 5th International Conference on AI in Cybersecurity (ICAIC) (pp. 1-6). IEEE.
- [17] K. S. Rajasekhar, “Warfield Robots and AI: Future of Unmanned Surveillance,” Indian Defence Research Journal, vol. 74, no. 3, pp. 55–62, 2020.