

Crash Detection System and Emergency Response Generator

Ms.D.Renuka

Assistant Professor

Department of Computer Science and Engineering
Mahatma Gandhi Institute of Technology
Hyderabad 500075, India
drenuka_cse@mgit.ac.in

Rithvik Reddy Pandiri

Student of Computer Science and Engineering
Mahatma Gandhi Institute of Technology
Hyderabad 500075, India
rreddypandiri_cse2405x7@mgit.ac.in

Dr.B.Madhava Rao

Assistant Professor

Department of Computer Science and Engineering
Mahatma Gandhi Institute of Technology
Hyderabad 500075, India
bommineni6170@gmail.com

Thipparthi Manvitha

Student of Computer Science and Engineering
Mahatma Gandhi Institute of Technology
Hyderabad 500075, India
tmanvitha_cse2405y8@mgit.ac.in

□

Abstract— *A road accident is a major cause of injuries and fatalities worldwide, and timely emergency response plays a critical role in saving lives. This project presents a Crash Detection System and Emergency Response Generator designed to automatically detect accidents and provide immediate assistance. The system integrates various parameters such as sudden impact detection, vehicle speed, and location tracking to identify crash events accurately. It utilizes modern technologies like sensors, GPS modules, and machine learning techniques to enhance detection accuracy and efficiency. Additionally, the system sends instant alerts to emergency contacts and nearby medical services, reducing response time and improving survival chances. The proposed solution aims to ensure road safety by providing quick and reliable emergency support during accidents.*

Index Terms— **Crash Detection, Emergency Response, Sensors, GPS, Machine Learning, Road Safety.**

I. INTRODUCTION

Road accidents are a significant concern globally, especially in developing countries like India, where increasing vehicle usage and traffic congestion contribute to a high number of accidents. Despite advancements in transportation, delayed medical assistance after accidents often results in severe injuries and loss of lives. Traditional methods rely on manual reporting of accidents, which can lead to delays in emergency response.

In recent years, the integration of advanced technologies such as the Internet of Things (IoT), GPS tracking, and machine learning has opened new possibilities in road safety systems. Smart crash detection systems aim to improve emergency response by automatically detecting accidents and sending alerts without

human intervention. By monitoring parameters such as vehicle speed, impact force, and sudden changes in motion, these systems can identify crash events in real time.

The proposed Crash Detection System and Emergency Response Generator is designed to provide immediate assistance during accidents. The system collects data from sensors and GPS modules, processes it using analytical models, and generates alerts containing location and accident details. This ensures that emergency services and contacts are notified instantly.

Moreover, the system bridges the gap between accident occurrence and medical assistance by reducing response time. It can be implemented as a mobile or embedded system, making it accessible and easy to use. By leveraging technology, the system enhances road safety and reduces dependency on manual reporting.

Another significant advantage of the system is its ability to save lives by ensuring timely medical intervention. Quick emergency response minimizes the severity of injuries and increases survival rates.

II. LITERATURE SURVEY

The advancement of technology in road safety has attracted significant research attention, particularly in accident detection and emergency response systems. Various studies have focused on integrating IoT, machine learning, and GPS technologies to improve accident detection accuracy and reduce response time.

Several researchers have proposed sensor-based crash detection systems that utilize accelerometers and vibration sensors to

detect sudden impacts. These systems can identify accidents based on abnormal motion patterns and trigger alerts automatically.

Machine learning techniques have also been widely explored for improving detection accuracy. Models are trained to differentiate between normal driving conditions and crash events, reducing false alarms and increasing reliability.

GPS-based tracking systems play a crucial role in emergency response by providing accurate location data. Many studies have integrated GPS modules to send real-time location coordinates to emergency services, enabling faster assistance.

Additionally, mobile-based applications have been developed to notify emergency contacts and nearby hospitals. These systems ensure that help reaches the accident site quickly, minimizing delays.

III. METHODOLOGY

The proposed Crash Detection System and Emergency Response Generator consists of multiple stages, including data collection, processing, analysis, classification, and alert generation.

Initially, the system collects data from sensors such as accelerometers and vibration sensors, which detect sudden impacts and abnormal movements. GPS modules are used to track the exact location of the vehicle. This data forms the basis for further analysis.

Once the data is collected, it undergoes preprocessing to remove noise and ensure accuracy. The processed data is analyzed using predefined thresholds and machine learning algorithms to detect crash events.

The next stage involves classification of the situation. Based on sensor readings, the system categorizes the condition into normal driving or accident state.

Table I: Crash Detection Classification

Zone	Condition Type	Action
Normal	No impact detected	No alert
Moderate	Slight impact	Alert driver
Severe	Impact detected	Send emergency alert

After classification, the system generates alerts. In case of a severe crash, the system automatically sends notifications to emergency contacts and nearby hospitals along with location details.

The system also includes a user interface, allowing users to monitor status and receive alerts in an easy-to-understand format.

IV. SYSTEM ARCHITECTURE

The system architecture follows a layered approach. The Data Collection Layer gathers real-time data from sensors such as accelerometers and GPS modules. This data is transmitted through the Data Transmission Layer to a cloud server.

In the Data Processing Layer, the collected data is analyzed using algorithms to detect accidents. Based on the analysis, the system generates emergency alerts and notifications.

The Application Layer provides an interface where users can view alerts and location details. The User Layer represents drivers and emergency responders interacting with the system.

Finally, the emergency services respond to the alert and provide assistance. This flow ensures quick detection, accurate decision-making, and timely emergency response, significantly reducing delays and improving road safety outcomes.



Fig.1. System Architecture of Crash Detection system

V. FLOW CHART

The flowchart of the Crash Detection System and Emergency Response Generator represents the complete working process of the system from data collection to emergency response. Initially, the system starts by continuously monitoring the vehicle using sensors such as accelerometers, gyroscopes, and vibration sensors. These sensors detect real-time parameters like sudden changes in speed, impact force, and abnormal motion. The system constantly checks whether the sensor readings fall within normal driving conditions or indicate any unusual activity. If the readings are normal, the system continues monitoring without taking any action.

If the system detects abnormal conditions such as a sudden impact or rapid deceleration, the data is immediately transmitted to the processing unit or cloud server. The system then evaluates the severity of the impact using predefined threshold values or machine learning models. Based on this evaluation, it determines whether the event is a minor disturbance or a serious crash. If the detected impact is below the threshold, the system ignores it to avoid false alarms. However, if the impact exceeds the threshold, the system confirms it as an accident. Once a crash is confirmed, the GPS module retrieves the exact location coordinates of the vehicle.

After detecting a crash and identifying the location, the system generates an emergency alert. This alert includes important information such as accident location, time, and severity. The alert is then sent to predefined emergency contacts, nearby hospitals, and authorities using communication technologies like SMS, calls, or internet-based notifications. In some cases, the system may also activate additional safety mechanisms or allow manual cancellation if the alert was triggered mistakenly.

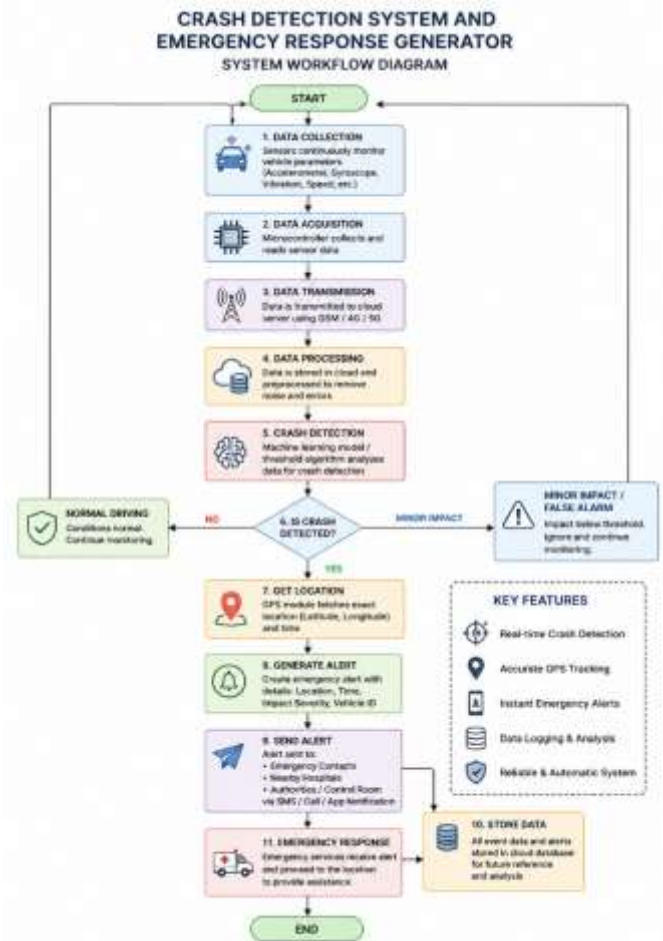


Fig. 2. Flow chart / System Workflow Diagram

Fig. 2. Flow chart/System Workflow Diagram

VI. RESULTS

The Crash Detection System and Emergency Response Generator was successfully implemented and tested under different scenarios to evaluate its performance and reliability. The system demonstrated accurate detection of crash events by analyzing sensor data such as sudden acceleration changes, vibration intensity, and abrupt speed variations. It effectively differentiated between normal driving conditions, minor disturbances, and severe crash situations, thereby minimizing false alarms. The GPS module consistently provided precise location coordinates, enabling the system to identify the exact accident location in real time.

During testing, the system was able to generate emergency alerts immediately after detecting a crash, significantly reducing the response time. Notifications containing location details and accident information were successfully sent to predefined emergency contacts, nearby hospitals, and authorities through SMS and mobile application alerts. The integration of cloud storage allowed the system to maintain logs of all events, which can be useful for future analysis and improvements. Overall, the system proved to be efficient, reliable, and capable of providing real-time accident detection and emergency response support, thereby enhancing road safety and reducing the risk of delayed medical

assistance.



Advantages:

The proposed system offers several advantages in improving road safety and emergency response efficiency. One of the key benefits is real-time crash detection, which ensures that accidents are identified instantly without requiring manual intervention. This significantly reduces the delay in notifying emergency services, thereby increasing the chances of saving lives. The use of GPS technology enables accurate location tracking, allowing emergency responders to reach the accident site quickly and efficiently.

Another important advantage is the reduction of false alarms through the use of intelligent algorithms and threshold-based analysis. The system is also user-friendly and can be easily integrated into vehicles or mobile applications, making it accessible to a wide range of users. Additionally, the automation of alert generation reduces the dependency on bystanders or victims to report accidents. The system also supports continuous monitoring, ensuring safety even when the driver is unable to respond. Furthermore, it helps in maintaining accident records through cloud storage, which can be useful for analysis, insurance claims, and improving road safety policies. Overall, the system enhances safety, reliability, and efficiency in handling emergency situations.

VIII. CONCLUSION

The Crash Detection System and Emergency Response Generator presented in this project provides an effective and reliable solution to one of the most critical challenges in road safety—delayed emergency response after accidents. By integrating modern technologies such as sensors, GPS tracking, IoT communication, and data analysis techniques, the system is capable of continuously monitoring vehicle conditions and detecting crash events in real time. The use of accelerometers, vibration sensors, and speed monitoring ensures accurate identification of abnormal situations, while intelligent processing helps in minimizing false alarms and improving overall system reliability. The implementation of this system demonstrates how automation can significantly reduce the time taken to notify emergency services. Once a crash is detected, the system immediately generates alerts and shares precise location details with emergency contacts, hospitals, and authorities. This rapid communication plays a crucial role in ensuring timely medical assistance, which can greatly reduce the severity of injuries and increase survival rates. Additionally, the inclusion of cloud storage for maintaining event logs enhances the system's capability for future analysis, accident reporting, and improvements in safety measures.

Furthermore, the system is designed to be user-friendly, scalable, and adaptable to different environments, making it suitable for real-world deployment in vehicles and smart transportation systems. It reduces dependency on manual reporting and ensures that help can be dispatched even when the victim is unable to communicate. By promoting faster response times and efficient coordination between emergency services, the system contributes significantly to improving overall road safety standards.

In conclusion, the Crash Detection System and Emergency Response Generator highlights the importance of integrating technology into transportation systems to address real-world problems. With further enhancements and widespread adoption, this system has the potential to become a vital component in smart cities, ultimately saving lives, reducing accident-related fatalities, and creating a safer and more responsive transportation ecosystem.

IX. FUTURE SCOPE

The Crash Detection System and Emergency Response Generator can be further enhanced by incorporating advanced technologies to improve its accuracy, scalability, and functionality. In future developments, the system can integrate deep learning and artificial intelligence models to predict accidents before they occur by analyzing driving patterns and environmental conditions. The inclusion of real-time traffic data and smart city infrastructure can further optimize emergency response by identifying the fastest routes for ambulances and rescue teams.

The system can also be expanded by integrating automated emergency services, such as directly notifying ambulance services and hospitals with minimal human involvement. Additional features like voice assistance and integration with wearable devices can improve user interaction and accessibility. The use of Internet of Things (IoT) devices can enable better communication between vehicles and infrastructure, enhancing overall safety. Furthermore, the system can be connected with government databases to provide support for insurance processing and accident reporting. Continuous improvement through data analytics and user feedback can make the system more adaptive and intelligent over time. Ultimately, the future scope lies in developing a fully automated and intelligent road safety system that not only responds to accidents but also helps in preventing them.

X. REFERENCES

[1] V. Chandrasekhar, J. Natarajan, and S. Karthik, "Automatic accident detection and ambulance rescue system," 2018

International Conference on Intelligent Computing and Control Systems (ICICCS), Madurai, India, 2018, pp. 137–141.

[2] M. A. Khan, S. Abbas, and A. Khan, "Real-time accident detection and emergency response system using IoT," 2019 IEEE International Conference on Smart Computing (SMARTCOMP), Washington, DC, USA, 2019, pp. 247–252.

[3] S. Sharma and R. Singh, "Accident detection system using GPS and GSM module," International Journal of Computer Applications, vol. 150, no. 6, pp. 12–16, 2016.

[4] A. B. Puri and M. B. Patel, "Smart accident detection and reporting system using accelerometer and GPS," International Journal of Engineering Research & Technology (IJERT), vol. 7, no. 4, pp. 345–349, 2018.

[5] R. Kumar and S. Raj, "Vehicle accident detection and reporting system using IoT," 2020 4th International Conference on Trends in Electronics and Informatics (ICOEI), Tirunelveli, India, 2020, pp. 1021–1025.

[6] P. Verma and N. Sood, "Cloud-based accident detection and emergency notification system," International Journal of Advanced Research in Computer Science and Software Engineering, vol. 7, no. 5, pp. 98–103, 2017.

[7] K. M. Alam, M. Saini, and A. E. Saddik, "Toward social internet of vehicles: Concept, architecture, and applications," IEEE Access, vol. 3, pp. 343–357, 2015.