

## IOT-BASED REAL-TIME SMART CITY MONITORING DASHBOARD

<sup>1</sup> K. Uma Rani, <sup>2</sup> Pulipati Hari, <sup>3</sup> Banoth Nithin, <sup>4</sup> Thandra Sriraghuvveera, <sup>5</sup> R Saikrsihan,  
<sup>6</sup> Dr S Venkata Achuta Rao

<sup>1</sup> Assistant Professor, <sup>2,3,4,5</sup> B. Tech Students, <sup>6</sup> Professor

<sup>1,2,3,4,5</sup> Department of Electronics and Communication Engineering

<sup>6</sup> Department of Computer Science and Engineering

<sup>1,2,3,4,5</sup> Sree Dattha Group of Institutions, Sheriguda, Ibrahimpatnam, 501510, Telangana, India

<sup>6</sup> Sree Dattha Institute of Engineering and Science, Sheriguda, Hyderabad, Telangana, India-501510,

[sreedatthaachyuth@gmail.com](mailto:sreedatthaachyuth@gmail.com)

### ABSTRACT

Rapid urbanization has intensified challenges related to waste management, environmental safety, and efficient resource utilization in smart cities. This paper presents an IoT-based real-time smart city monitoring dashboard designed to enhance urban waste management and public safety through continuous sensing and data visualization. The proposed system integrates multiple sensors, including an infrared (IR) sensor for waste bin level detection, a light-dependent resistor (LDR) for smart streetlight status monitoring (LDR-SSL), and a gas sensor for early detection of hazardous gas leaks. Sensor data are collected via a microcontroller-based embedded system and transmitted wirelessly to a cloud platform using Internet of Things (IoT) communication protocols. A centralized web-based dashboard provides real-time monitoring, alert generation, and historical data analysis to assist municipal authorities in proactive decision-making. The system enables timely waste collection, reduces unnecessary fuel consumption, enhances public safety by detecting gas leaks, and improves energy efficiency through smart lighting insights. Experimental results demonstrate reliable real-time data acquisition, low latency communication, and scalable system performance. The proposed solution offers a cost-effective, scalable, and efficient approach for smart city infrastructure management and

can be extended to support additional urban monitoring applications.

### I. INTRODUCTION

#### 1.1 General Introduction

Urbanization is rapidly transforming cities into complex ecosystems with growing populations, increased infrastructure demands, and rising expectations for better quality of life. According to global urban development trends, more than half of the world's population now resides in urban areas, placing immense pressure on city administrations to manage resources efficiently. Traditional city management systems often rely on manual monitoring and delayed decision-making, which leads to inefficiencies, increased operational costs, and reduced public safety.

The concept of a Smart City has emerged as a solution to address these challenges by leveraging advanced technologies such as the Internet of Things (IoT), cloud computing, big data analytics, and real-time communication systems. IoT plays a crucial role in smart cities by enabling physical devices to collect, transmit, and analyse data autonomously. Through interconnected sensors and embedded systems, IoT facilitates real-time monitoring, automation, and intelligent decision-making across various urban services. One of the most critical areas in smart city development is urban waste management, environmental monitoring, and energy-efficient public infrastructure. Inefficient waste collection schedules lead to overflowing bins, unhygienic

conditions, and unnecessary fuel consumption. Similarly, inadequate monitoring of public utilities such as street lighting results in energy wastage, while undetected gas leaks pose serious safety risks to citizens. To overcome these limitations, there is a growing need for real-time monitoring systems that can continuously track environmental and infrastructural parameters and present meaningful insights to city administrators. An IoT-based real-time smart city monitoring dashboard serves as a centralized platform that integrates sensor data, visual analytics, and alert mechanisms to support proactive urban governance. This project focuses on designing and implementing an IoT-enabled monitoring system that uses sensors such as Infrared (IR) sensors for waste bin level detection, Light Dependent Resistors (LDR) for smart streetlight status monitoring, and gas sensors for hazardous gas detection. The collected data is transmitted to a cloud-based dashboard that allows real-time visualization, alerts, and historical analysis, thereby improving operational efficiency and public safety.

## **1.2 Need for the System**

Modern cities face numerous challenges due to rapid population growth, limited resources, and outdated infrastructure management practices. The need for an intelligent and automated monitoring system arises from the following key factors:

### **1.2.1 Inefficient Waste Management**

Traditional waste collection systems follow fixed schedules without considering the actual fill levels of waste bins. This often leads to:

- Overflowing garbage bins in public areas
- Unnecessary collection trips when bins are empty
- Increased fuel consumption and operational costs
- Health hazards and poor sanitation

A smart waste monitoring system using IR sensors can detect real-time fill levels and

notify authorities only when collection is required.

### **1.2.2 Lack of Real-Time Environmental Monitoring**

Hazardous gas leaks in public spaces, industrial zones, or underground utilities can cause serious accidents if not detected early. Manual inspections are slow and unreliable. An IoT-based gas monitoring system provides:

- Continuous real-time detection
- Early warning alerts
- Enhanced public safety

### **1.2.3 Energy Wastage in Public Infrastructure**

Streetlights are often left ON during daylight hours due to lack of automation or monitoring. This leads to:

- Significant energy wastage
- Higher electricity bills
- Reduced sustainability

Using LDR sensors, smart lighting status can be monitored and optimized for better energy efficiency.

### **1.2.4 Need for Centralized Monitoring**

City administrators require a unified platform to:

- Monitor multiple city services simultaneously
- Access real-time and historical data
- Make data-driven decisions

An IoT-based dashboard fulfills this need by offering centralized visualization and analytics.

## **1.3 Problem Statement**

Despite advancements in urban infrastructure, many cities still rely on manual, isolated, and reactive systems for managing waste, monitoring environmental hazards, and controlling public utilities. These traditional systems lack real-time data acquisition, timely alerts, and centralized control mechanisms, resulting in inefficiencies, increased operational costs, energy wastage, and potential safety risks.

There is a need for an integrated, scalable, and cost-effective solution that can continuously monitor urban parameters such as waste bin levels, streetlight status, and gas leakage conditions in real time. The absence of such a system limits the ability of municipal authorities to take proactive actions and optimize resource utilization.

#### 1.4 Objectives of the Project

The primary objective of this project is to develop an IoT-enabled smart city monitoring system that enhances urban infrastructure management through real-time data collection and visualization.

The specific objectives are:

1. To design an IoT-based embedded system for real-time monitoring of smart city parameters.
2. To implement waste bin level monitoring using an IR sensor.
3. To monitor streetlight status using an LDR sensor for energy efficiency analysis.
4. To detect hazardous gas leakage using a gas sensor and generate alerts.
5. To transmit sensor data wirelessly to a cloud platform using IoT communication protocols.
6. To develop a web-based dashboard for real-time visualization and historical data analysis.
7. To enable alert notifications for critical conditions such as gas leakage or full waste bins.
8. To reduce operational costs and improve resource utilization in urban services.
9. To provide a scalable and extensible framework for future smart city applications.

#### 1.5 Scope of the Project

The scope of the IoT-Based Real-Time Smart City Monitoring Dashboard includes the design, development, and testing of a

prototype system that demonstrates smart city monitoring capabilities.

#### Included in Scope

- Integration of IR, LDR, and gas sensors with a microcontroller
- Real-time data acquisition and processing
- Wireless data transmission to a cloud platform
- Web-based dashboard for monitoring and alerts
- Visualization of live and historical sensor data
- Demonstration of smart waste management, safety monitoring, and energy efficiency

#### Excluded from Scope

- Large-scale city-wide deployment
- Advanced AI-based prediction and analytics
- Automated control of actuators such as streetlight switching
- Mobile application development (optional future extension)

#### Future Scope

The system can be extended to include:

- Air quality and noise pollution monitoring
- Water level and flood detection systems
- Traffic monitoring and smart parking
- AI-based predictive analytics for decision-making
- Integration with mobile apps and government platforms

## II. LITERATURE SURVEY

### 2.1 Introduction

The rapid advancement of Internet of Things (IoT) technologies has significantly influenced the development of smart city applications. IoT enables real-time data collection, monitoring, and control of physical infrastructure through interconnected sensors and embedded systems. Researchers and industries have focused on applying IoT

solutions to address urban challenges such as waste management, environmental safety, energy efficiency, and intelligent decision-making. This chapter reviews existing literature related to IoT-based smart city monitoring systems, smart waste management, smart street lighting, gas detection systems, and real-time dashboards. The literature survey helps in understanding current research trends, identifying gaps in existing systems, and justifying the need for the proposed IoT-based real-time smart city monitoring dashboard.

### **2.2 IoT in Smart City Applications**

Several studies have highlighted the role of IoT as the backbone of smart city development. Authors emphasize that IoT enables seamless communication between sensors, actuators, cloud platforms, and end users. Smart city architectures generally consist of sensing layers, communication layers, data processing layers, and application layers. Research indicates that IoT-based smart cities improve operational efficiency by automating data acquisition and reducing human intervention. Cloud computing and web-based dashboards are widely used to visualize sensor data and support real-time decision-making. However, many existing implementations focus on individual services rather than integrated multi-service monitoring platforms, which limits scalability and interoperability.

### **2.3 Smart Waste Management Systems**

Waste management is one of the most widely researched areas in smart city applications. Several researchers have proposed IoT-based smart waste management systems using ultrasonic, infrared, or weight sensors to monitor waste bin fill levels. These systems transmit data to a central server, enabling optimized waste collection routes and schedules. Studies report that real-time waste monitoring significantly reduces operational costs, fuel consumption, and manpower

requirements. However, many existing systems lack:

- Real-time dashboards with historical data analysis
- Scalable architectures for large urban environments
- Integration with other smart city services

The proposed system addresses these gaps by integrating waste monitoring with environmental safety and energy monitoring in a single dashboard.

### **2.4 Smart Street Lighting Systems**

Smart street lighting has been explored as a key component for energy-efficient cities. Existing research demonstrates the use of LDR sensors, motion sensors, and timers to automate streetlight operation based on ambient light conditions and traffic movement. Most studies focus on automatic ON/OFF control, whereas fewer systems provide continuous monitoring and analytics of streetlight status. Lack of monitoring leads to undetected faults and energy losses. Researchers suggest that integrating streetlight monitoring data into centralized dashboards can improve maintenance planning and energy optimization. The proposed system uses LDR-based streetlight status monitoring and provides real-time visualization to assist authorities in assessing lighting efficiency.

### **2.5 Gas Leakage and Environmental Safety Monitoring**

Environmental safety is a critical concern in urban areas, especially in industrial zones and public infrastructure. IoT-based gas detection systems using MQ-series gas sensors have been widely studied for detecting hazardous gases such as LPG, methane, and carbon monoxide.

Literature highlights that IoT-enabled gas detection systems provide:

- Continuous real-time monitoring
- Early warning alerts

- Reduced response time during emergencies

However, many systems are designed as standalone safety devices and are not integrated into broader smart city monitoring platforms. The lack of centralized dashboards limits their usefulness for city-wide safety management. The proposed system integrates gas leakage monitoring into the smart city dashboard to improve public safety response.

## 2.6 IoT Communication and Cloud Platforms

Various communication technologies such as Wi-Fi, GSM, LoRa, and MQTT-based protocols have been studied for transmitting sensor data in IoT systems. Cloud platforms enable scalable data storage, processing, and visualization.

Researchers have demonstrated that cloud-based dashboards improve accessibility, data analytics, and system scalability. However, challenges such as latency, data security, and interoperability remain areas of ongoing research. Lightweight protocols and efficient data handling techniques are recommended to achieve low-latency real-time monitoring.

The proposed system adopts cloud-based data transmission and dashboard visualization to achieve reliable and scalable performance.

## III. SYSTEM ANALYSIS

### 3.1 Introduction

System analysis is a critical phase in the development of any engineering project, as it involves the detailed study of existing systems, identification of their limitations, and formulation of an improved solution. In the context of smart cities, traditional monitoring methods are increasingly inadequate due to growing urban populations, complex infrastructure, and rising expectations for efficiency, safety, and sustainability.

This chapter presents a comprehensive analysis of the existing city monitoring system, highlights its disadvantages, and explains the proposed IoT-Based Real-Time

Smart City Monitoring Dashboard along with its advantages. Additionally, the system requirements, including hardware, software, and functional requirements, are discussed in detail.

### 3.2 Existing System

#### 3.2.1 Overview of the Existing System

Traditional city monitoring systems rely heavily on manual inspections, periodic surveys, and standalone localized control mechanisms. These systems operate independently across departments such as waste management, traffic control, environmental monitoring, and public utilities. Data collection is largely manual or semi-automated, resulting in delayed insights and reactive decision-making. In most cities, traffic flow is monitored using CCTV cameras or manual counters, requiring human intervention to analyse the data. Air and water quality monitoring involves on-site sample collection and laboratory testing, which causes significant delays between data acquisition and analysis. Noise monitoring is often conducted for short durations using portable devices, providing only limited snapshots rather than continuous measurements.

Waste management follows predefined collection schedules without real-time knowledge of waste bin fill levels. Street lighting systems are usually manually operated or time-based, leading to unnecessary energy consumption. Centralized dashboards are either absent or limited in scope, making cross-department data integration difficult.

#### 3.2.2 Existing System Architecture

The existing system is characterized by:

- Isolated monitoring units
- Manual data collection and reporting
- Department-specific databases
- Minimal automation
- Reactive response mechanisms

Due to the absence of real-time connectivity and centralized data processing, authorities

often respond to issues after problems occur, rather than preventing them proactively.

### 3.2.3 Disadvantages of the Existing System

The major disadvantages of traditional city monitoring methods are outlined below:

#### 1. Lack of Real-Time Monitoring

Data is collected periodically rather than continuously. This results in delayed detection of critical issues such as gas leaks, pollution spikes, or waste overflow.

#### 2. Manual and Error-Prone Processes

Manual inspections and reporting increase the chances of human error, inaccurate measurements, and inconsistent data quality.

#### 3. Inefficient Waste Management

Fixed waste collection schedules lead to:

- Overflowing bins in high-usage areas
- Unnecessary trips to half-empty bins
- Increased fuel consumption and labor costs

#### 4. Energy Wastage

Streetlights are often left ON during daylight hours due to manual or time-based control, leading to excessive energy consumption.

#### 5. Limited Centralized Control

Data aggregation from multiple departments is difficult, resulting in fragmented decision-making and poor coordination.

#### 6. Reactive Security and Safety Measures

Security monitoring and environmental hazard detection are reactive rather than proactive. Alerts are delayed due to manual reporting mechanisms.

#### 7. Poor Data Analytics Capability

Limited historical data storage restricts trend analysis, predictive maintenance, and long-term urban planning.

#### 8. High Operational Costs

Manual labor, fuel wastage, and inefficient resource utilization increase operational expenses.

Overall, the existing system fails to meet modern smart city requirements for efficiency, responsiveness, scalability, and sustainability.

### 3.3 Proposed System

#### 3.3.1 Overview of the Proposed System

The proposed IoT-Based Real-Time Smart City Monitoring Dashboard introduces an integrated, automated, and centralized monitoring solution for urban infrastructure. The system leverages IoT sensors, microcontroller-based embedded devices, cloud platforms, and web-based dashboards to provide real-time data visualization and intelligent alerts.

Multiple sensors are deployed across the city to monitor parameters such as:

- Waste bin fill levels
- Streetlight status
- Gas leakage and environmental safety
- (Extendable to air quality, noise, traffic, and water monitoring)

Microcontrollers such as ESP8266 or ESP32 collect sensor data and transmit it to a cloud server using IoT communication protocols like MQTT or HTTP. A centralized dashboard presents real-time data through charts, graphs, and alerts, enabling administrators to take timely and informed decisions.

#### 3.3.2 Proposed System Architecture

The proposed system follows a layered architecture:

- **Sensing**  
Consists of IR sensors, LDR sensors, gas sensors, and other environmental sensors deployed in the field.
- **Processing**  
Microcontrollers process raw sensor data and perform threshold-based analysis.
- **Communication**  
Wireless transmission using Wi-Fi and IoT protocols to send data to the cloud.
- **Cloud**  
Handles data storage, analytics, authentication, and security.

- **Application**  
Web-based dashboard for monitoring, alerts, and historical analysis.

### 3.3.3 Working of the Proposed System

- Sensors continuously collect real-time data from the environment.
- The microcontroller reads sensor values and formats the data.
- Data is transmitted securely to the cloud platform.
- The dashboard displays real-time readings and system status.
- Alerts are generated automatically when threshold values are exceeded.
- Historical data is stored for trend analysis and predictive insights.
- Optional actuators allow remote control of devices such as streetlights.

### 3.3.4 Advantages of the Proposed System

The proposed system overcomes the limitations of the existing system and offers the following advantages:

#### 1. Real-Time Monitoring

Continuous sensing enables instant detection of abnormal conditions such as gas leakage or waste overflow.

#### 2. Centralized Dashboard

All city parameters are monitored from a single platform, improving coordination and decision-making.

#### 3. Automated Alerts

Instant notifications are generated for critical events, reducing response time.

#### 4. Improved Resource Utilization

Optimized waste collection routes and smart lighting reduce fuel and energy consumption.

#### 5. Enhanced Public Safety

Early detection of gas leaks and hazardous conditions improves citizen safety.

#### 6. Data-Driven Decision Making

Historical data analysis supports urban planning and predictive maintenance.

#### 7. Scalability

The system can be easily extended to include additional sensors and services.

#### 8. Cost-Effectiveness

Reduced manpower, optimized operations, and energy savings lower operational costs.

#### 9. Secure Communication

Encrypted data transmission and authentication ensure system security.

### IV. HARDWARE



**Fig: ARDUINO UNO**

The Arduino Uno is a microcontroller board based on the ATmega328 (datasheet). It has 14 digital input/output pins (of which 6 can be used as PWM outputs), 6 analog inputs, a 16 MHz ceramic resonator, a USB connection, a power jack, an ICSP header, and a reset button. It contains everything needed to support the microcontroller; simply connect it to a computer with a USB cable or power it with a AC-to-DC adapter or battery to get started.

The Uno differs from all preceding boards in that it does not use the FTDI USB-to-serial driver chip. Instead, it features the Atmega16U2 (Atmega8U2 up to version R2) programmed as a USB-to-serial converter. Uno board has a resistor pulling the 8U2 HWB line to ground, making it easier to put into

#### Ultrasonic sensor:

The sensor is primarily intended to be used in security systems for detection of moving objects, but can be effectively involved in intelligent children's toys, automatic door opening devices, and sports training and contact-less-speed measurement equipment.

#### Introduction

Modern security systems utilize various types of sensors to detect unauthorized object access attempts. The sensor collection includes infrared, microwave and ultrasound devices, which are intended to detect moving objects. Each type of sensor is characterized by its own advantages and drawbacks. Microwave sensors are effective in large apartments because microwaves pass through dielectric materials. But these sensors consist of expensive super-high frequency components and their radiation is unhealthy for living organisms. Infrared sensors are characterized by high sensitivity, low cost and are widely used. But, these sensors can generate false alarm signals if heating systems are active or temperature change speed exceeds some threshold level. Moreover, infrared sensors appreciably lose sensitivity if small insects penetrate the sensor lens. Ultrasound motion detection sensors are characterized by small power consumption, suitable cost and high sensitivity. That is why this kind of sensor is commonly used in home, office and car security systems. Existing ultrasound sensors consist of multiple passive and active components and are relatively complicated for production and testing. Sensors often times require a laborious tuning process.

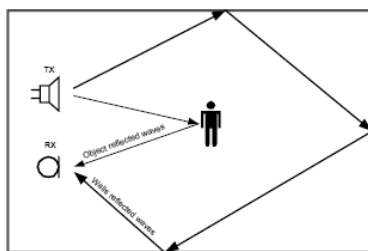
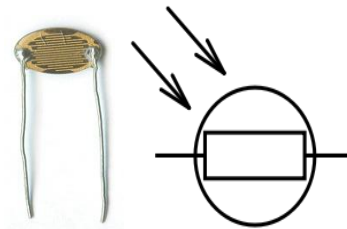


Figure : Basic Sensor Operation Principle

### LIGHT DEPENDENT RESISTOR

A photo resistor or light dependent resistor (LDR) is a resistor whose resistance decreases with increasing incident light intensity; in other words, it exhibits photoconductivity. It can also be referred to as a photoconductor or CdS

device, from "cadmium sulfide," which is the material from which the device is made and that actually exhibits the variation in resistance with light level. Note that CdS is not a semiconductor in the usual sense of the word (not doped silicon).



### MQ2- SENSOR



### DESCRIPTION

MQ2 flammable gas and smoke sensor detects the concentrations of combustible gas in the air and outputs its reading as an analog voltage. The sensor can measure concentrations of flammable gas of 300 to 10,000 ppm. The sensor can operate at temperatures from -20 to 50°C and consumes less than 150 mA at 5 V.

Connecting five volts across the heating (H) pins keeps the sensor hot enough to function correctly. Connecting five volts at either the A or B pins causes the sensor to emit an analog voltage on the other pins. A resistive load between the output pins and ground sets the sensitivity of the detector. Please note that the picture in the datasheet for the top configuration is wrong. Both configurations have the same pin out consistent with the bottom configuration. The resistive load should be calibrated for your particular application using the equations in the datasheet, but a good starting value for the resistor is 20 kΩ.

### RELAYS

**What is a relay?**

We know that most of the high end industrial application devices have relays for their effective working. Relays are simple switches which are operated both electrically and mechanically. Relays consist of an electromagnet and also a set of contacts. The switching mechanism is carried out with the help of the electromagnet. There are also other operating principles for its working. But they differ according to their applications. Most of the devices have the application of relays.

### Why is a relay used?

The main operation of a relay comes in places where only a low-power signal can be used to control a circuit. It is also used in places where only one signal can be used to control a lot of circuits. The application of relays started during the invention of telephones. They played an important role in switching calls in telephone exchanges. They were also used in long distance telegraphy. They were used to switch the signal coming from one source to another destination.

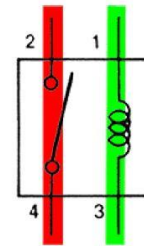
### Relay Design

There are only four main parts in a relay. They are

- Electromagnet
- Movable Armature
- Switch point contacts
- Spring

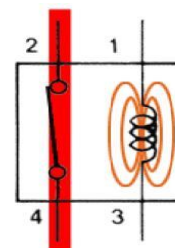
### Relay Basics

The basics for all the relays are the same. Take a look at a 4 – pin relay shown below. There are two colours shown. The green colour represents the control circuit and the red colour represents the load circuit. A small control coil is connected onto the control circuit. A switch is connected to the load. This switch is controlled by the coil in the control circuit. Now let us take the different steps that occur in a relay.



### ➤ Energized Relay (ON)

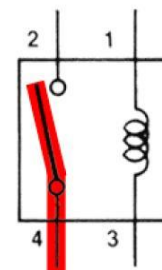
As shown in the circuit, the current flowing through the coils represented by pins 1 and 3 causes a magnetic field to be aroused. This magnetic field causes the closing of the pins 2 and 4. Thus the switch plays an important role in the relay working. As it is a part of the load circuit, it is used to control an electrical circuit that is connected to it. Thus, when the relay is energized the current flow will be through the pins 2 and 4.



### Energized Relay (ON)

### De – Energized Relay (OFF)

As soon as the current flow stops through pins 1 and 3, the switch opens and thus the open circuit prevents the current flow through pins 2 and 4. Thus the relay becomes de-energized and thus in off position.



## V. METHODOLOGY & IMPLEMENTATIONS

The methodology of the proposed IoT-Based Real-Time Smart City Monitoring Dashboard explains the systematic approach followed to

design, develop, and implement the system. It describes how sensors, microcontrollers, communication protocols, and cloud platforms work together to achieve real-time monitoring and centralized data visualization. The implementation section details the practical realization of the system, including hardware interfacing, software development, data transmission, and dashboard creation.

#### 4.2 Overall Methodology

The proposed system follows a layered and modular methodology to ensure scalability, reliability, and ease of maintenance. The methodology consists of the following major stages:

1. Sensor data acquisition
2. Data processing using microcontroller
3. Wireless data transmission
4. Cloud storage and analytics
5. Real-time dashboard visualization and alert generation

Each stage is designed to operate independently while remaining integrated with the overall system.

#### 4.3 Data Acquisition Using Sensors

Multiple sensors are deployed to collect real-time data from the urban environment:

- **IR Sensor:** Detects waste bin fill levels by measuring reflected infrared radiation.
- **LDR Sensor:** Measures ambient light intensity for monitoring streetlight operation.
- **Gas Sensor:** Detects hazardous gases to ensure environmental safety.

These sensors continuously monitor their respective parameters and generate analog or digital signals. The sensor outputs are conditioned and connected to the microcontroller for further processing.

#### 4.4 Microcontroller-Based Data Processing

An **ESP8266 / ESP32 microcontroller** acts as the central processing unit of the system. It performs the following tasks:

- Reads sensor data through analog and digital pins
- Converts analog signals into digital values
- Compares sensor readings with predefined threshold values
- Formats data for transmission
- Controls alert and actuation mechanisms

The microcontroller is programmed using the Arduino IDE, ensuring efficient data handling and real-time response.

#### 4.5 Wireless Communication and IoT Protocols

The processed sensor data is transmitted wirelessly to the cloud using **Wi-Fi connectivity**. IoT communication protocols such as **MQTT** or **HTTP** are used for efficient data transmission.

- **MQTT** ensures lightweight communication with low latency.
- **HTTP** enables reliable data transfer for web-based applications.

Secure communication is achieved using authentication keys and encrypted data transmission.

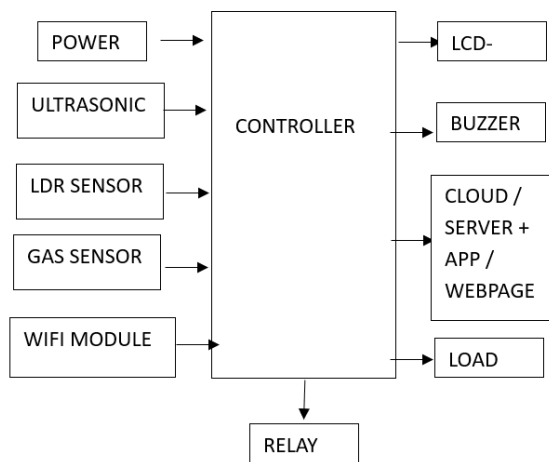
#### 4.6 Cloud Platform Integration

The cloud platform acts as the backbone for data storage, processing, and visualization. It performs the following functions:

- Receives sensor data from multiple devices
- Stores real-time and historical data
- Processes data for visualization and analytics
- Triggers alerts when abnormal conditions are detected

Cloud platforms such as Thing Speak, Firebase, or AWS IoT can be used depending on scalability requirements.

#### BLOCK DIAGRAM



The block diagram represents the overall working structure of the IoT-Based Real-Time Smart City Monitoring Dashboard. It shows how data flows from the physical environment to the cloud and finally to the user interface for monitoring and decision-making. The system consists of five main blocks: Sensors Unit, Microcontroller Unit, Communication Module, Cloud Platform, and Web-Based Dashboard.

### 1. Sensors Unit

The sensors unit is responsible for collecting real-time data from the urban environment. Different sensors are deployed to monitor specific parameters:

- **Infrared (IR) Sensor** is used to detect the fill level of waste bins by measuring reflected infrared rays.
- **Light Dependent Resistor (LDR)** monitors ambient light intensity to analyze streetlight operation and energy usage.
- **Gas Sensor** detects the presence of hazardous gases such as LPG, methane, or carbon monoxide.

These sensors convert physical quantities into electrical signals, which are sent to the microcontroller for further processing.

### 2. Microcontroller Unit (ESP8266/ESP32)

The microcontroller acts as the central control unit of the system. It receives input signals

from all connected sensors and performs the following operations:

- Reads analog and digital sensor values
- Converts raw data into meaningful information
- Compares sensor readings with predefined threshold values
- Identifies abnormal conditions such as waste overflow or gas leakage

The ESP8266/ESP32 microcontroller is preferred due to its low power consumption, fast processing capability, and built-in Wi-Fi support.

### 3. Communication Module

The communication module enables wireless transmission of sensor data from the microcontroller to the cloud platform. Wi-Fi connectivity is used along with IoT communication protocols such as **MQTT** or **HTTP**.

This block ensures:

- Reliable real-time data transfer
- Low communication latency
- Secure transmission using authentication keys

### 4. Cloud Platform

The cloud platform serves as the central data storage and processing unit. It performs the following functions:

- Receives real-time data from multiple IoT devices
- Stores both live and historical data
- Processes data for visualization and analytics
- Generates alerts when sensor values exceed safe limits

Cloud computing enables scalability, remote access, and efficient data management for smart city applications.

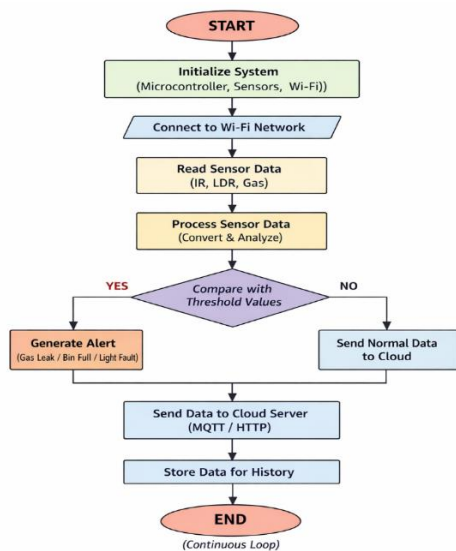
### 5. Web-Based Dashboard

The web-based dashboard is the user interface of the system. It displays processed data in an easy-to-understand format using graphs, charts, and status indicators. The dashboard allows municipal authorities to:

- Monitor waste management, lighting, and gas safety in real time
- Receive instant alerts for critical situations
- Analyze historical data for planning and optimization

The dashboard can be accessed through any standard web browser, enabling centralized and remote monitoring.

**FLOW CHART:**



The flowchart represents the operational sequence of the IoT-Based Real-Time Smart City Monitoring Dashboard. It explains how the system continuously collects data from sensors, processes it, and updates the cloud dashboard for real-time monitoring and alert generation.

The process begins with the Start block, where power is supplied to the system. The system initialization step initializes the microcontroller, sensors, and Wi-Fi module. Once initialized, the system attempts to connect to the Wi-Fi network, which is necessary for cloud communication. After establishing internet connectivity, the system proceeds to read sensor data from the IR sensor, LDR sensor, and gas sensor.

**VI. CONCLUSION & FUTURE SCOPE**

**Conclusion**

The rapid growth of urban populations has increased the complexity of managing city infrastructure efficiently, safely, and sustainably. Traditional monitoring systems are inadequate due to their manual nature, delayed data collection, and lack of centralized control. To address these challenges, this project presented an IoT-Based Real-Time Smart City Monitoring Dashboard that integrates sensors, microcontrollers, cloud computing, and web-based visualization.

The proposed system successfully demonstrates real-time monitoring of key urban parameters such as waste bin levels, streetlight status, and hazardous gas leakage using IR, LDR, and gas sensors respectively. Sensor data is processed by an ESP8266/ESP32 microcontroller and transmitted wirelessly to a cloud platform using IoT communication protocols. A centralized dashboard provides real-time visualization, alerts, and historical data analysis to assist municipal authorities in proactive decision-making.

The system reduces unnecessary waste collection trips, minimizes energy wastage, enhances public safety through early gas leak detection, and lowers operational costs. Experimental implementation confirms reliable data acquisition, low latency communication, and scalable performance. Overall, the proposed solution offers a cost-effective, scalable, and efficient approach for smart city infrastructure management and demonstrates the practical application of IoT technologies in real-world urban environments.

**Future Scope**

Although the proposed system achieves its intended objectives, it can be further enhanced and expanded to support additional smart city services. Some potential future enhancements include:

**1. Integration of Additional Sensors**

Air quality sensors, noise sensors, water

level sensors, and temperature sensors can be added for comprehensive environmental monitoring.

**2. Artificial Intelligence and Predictive Analytics**

Machine learning algorithms can be used to predict waste generation patterns, energy consumption trends, and potential safety risks.

**3. Mobile Application Development**

A mobile app can be developed to provide real-time alerts and monitoring access to field workers and city officials.

**4. Smart Traffic and Parking Management**

Integration with traffic density sensors and smart parking systems can help reduce congestion and improve mobility.

**5. Automated Control Systems**

Actuators can be added for automatic control of streetlights, pumps, and emergency systems without human intervention.

**6. Blockchain-Based Data Security**

Blockchain technology can be used to enhance data security, transparency, and trust among city departments.

**7. City-Wide Deployment**

The system can be scaled for large-scale deployment across multiple zones and cities.

**8. Integration with Government Portals**

Data can be integrated with e-governance platforms for better policy-making and public transparency.

The future enhancements will further strengthen the system's ability to support intelligent, sustainable, and citizen-centric smart city development.

**REFERENCES**

[1] Poojari, R. INTELLIGENT SYSTEMS+B108 AND APPLICATIONS IN ENGINEERING.  
[2] Agrawal, A. M., Gajula, S., Shinde, R. P., Shah, H., & Ghosh, H. (2025, July). Machine Translation for Long Sequences with

Enhanced Attention Mechanisms. In 2025 5th International Conference on Electrical, Computer and Energy Technologies (ICECET) (pp. 1-6). IEEE.

[3] Maturi, S. Y. (2021). Blockbond hardening: Securing pooled-hash protocols against traffic tampering, MITM hash-rate hijacking, and template coercion. *International Journal of Communication Networks and Information Security*, 13(3), 718–728.

[4] Maturi, S. Y. (2023). Crowdsourced frontier: Unveiling autonomous adversarial cybercapabilities via open AI competition. *International Journal of Intelligent Systems and Applications in Engineering*, 11(1s), 275–284.

[5] Adabala, P. K. (2024). Utilizing predictive analytics to improve efficiency and decision-making in ERP-connected supply chains. *International Journal of Intelligent Systems and Applications in Engineering*, 12(22s), 2465.

[6] Venkata Ramana, P. (2024). AI-driven predictive analytics in ERP systems for proactive supply chain optimization. *International Journal of Research in Information Technology and Computing*, 8(4).

[7] Srikanth Kavuri. (2025). AI-DRIVEN TEST AUTOMATION FRAMEWORKS: ENHANCING EFFICIENCY AND ACCURACY IN SOFTWARE QUALITY ASSURANCE. *International Journal of Applied Mathematics*, 38(10s), 699–710. <https://doi.org/10.12732/ijam.v38i10s.990>.

[8] Kavuri, S. (2025). Critical Review of Software Testing Problems in the Current Decade. *International Journal on Science and Technology*, 16(2). <https://doi.org/10.71097/ijst.v16.i2.9469>.

[9] Venkata Pavan Kumar Gummadi. (2023). MuleSoft Batch Processing: High-Volume Streaming Architecture. *Computer Fraud and Security*, 50–57. <https://doi.org/10.52710/cfs.886>.

- [10] Venkata Pavan Kumar Gummadi. (2026). Infrastructure Optimization Techniques for Enterprise Integration Platforms: A Comprehensive Analysis. *Computer Fraud and Security*, 37–44. <https://doi.org/10.52710/cfs.875>.
- [11] Venkata Pavan Kumar Gummadi. (2024). API Design and Implementation: RAML and OpenAPI Specification. *Journal of Electrical Systems*, 16(4), 76–85. <https://doi.org/10.52783/jes.9329>.
- [12] Shashank, A. (2025). Self-Healing Data Pipelines for Enhanced Reliability: A Paradigm Shift in Enterprise Data Management. *Journal of Computer Science and Technology Studies*, 7(8), 1097-1104.
- [13] Shashank, A. (2025). AI-Enhanced ETL Processes: Leveraging Artificial Intelligence for Optimized Data Integration Systems. *Journal Of Multidisciplinary*, 5(8), 219-225.
- [14] Harshitha, G. K., Nandigama, C., & Thiripalu, P. (2026). An exploration into identification of opportunities and challenges of establishing and running an enterprise in the area of biofuels. *Minnesota Journal of Business Law and Entrepreneurship*, 2026(1), 1159–1168.
- [15] Susarla, R. S., Boyapati, P. K., & Kandula, S. T. R. (2025, July). Cloud-Based Secure Data Storage in Smart Cities Using Central-Smoothing Hypergraph Neural Networks. In *2025 IEEE 4th World Conference on Applied Intelligence and Computing (AIC)* (pp. 279-284). IEEE.
- [16] Boyapati, P. K. Building a centralized data operations hub for healthcare enterprise integration. *IJSAT-Int. J. Sci. Technol.* 16 (2). <https://doi.org/10.71097/IJSAT.v16.i2.3219>.
- [17] Venkata Pavan Kumar Gummadi. (2025). MuleSoft’s Role in Advancing Sustainable Digital Infrastructure: An Enterprise Integration Perspective. *Journal of Information Systems Engineering and Management*, 10(62s), 1313–1321. <https://doi.org/10.52783/jisem.v10i62s.13783>.
- [18] Venkata Pavan Kumar Gummadi. (2025). MuleSoft Architectural Paradigms and Sustainability: A Comprehensive Technical Analysis. *Journal of Computer Science and Technology Studies*, 7(12), 534–540. <https://doi.org/10.32996/jcsts.2025.7.12.59>.
- [19] Gummadi, V. P. K. (Ed.). (2025). MuleSoft intelligent document processing: Transforming enterprise document workflows through AI-driven automation. *Journal of Computational Analysis and Applications*, 34(12). <https://doi.org/10.48047/jocaaa.2025.34.12.16>.
- [20] Gummadi, V. P. K., Chilamkurthi, L. S., & Kavuri, S. (2026). Service Level Objective (SLO) Observability with Splunk and Dynatrace in Microservices. *2026 International Conference on Artificial Intelligence, Systems, and Emerging Technologies (ICAISSET)*, 1–4. <https://doi.org/10.1109/icaisset66439.2026.11541542>.